



MADISON AREA
FOOD PANTRY GARDENS
WE PLANT. WE GROW. WE FEED.

Annual Report

About Us

Madison Area Food Pantry Gardens (MAFPG) is a Dane County, Wisconsin non-profit with a 22-year history creating community-level nutrition security through gleaning (collecting surplus produce from farms and markets) and growing first-choice, fresh, nutritious, and culturally relevant produce for donation to the local emergency food system. MAFPG supplies over 100,000 pounds of produce per season as a result of the substantial community collaboration reflected in our shared vision Wisconsin EATS Healthy, a vision that emphasizes the importance of partnerships and collaboration to support the creation of statewide nutrition security.

Wisconsin EATS Healthy

Enhanced nutrition security for all

Amplified partnerships & collaboration

Transformed regional food system

Sustainable practices & economic stability



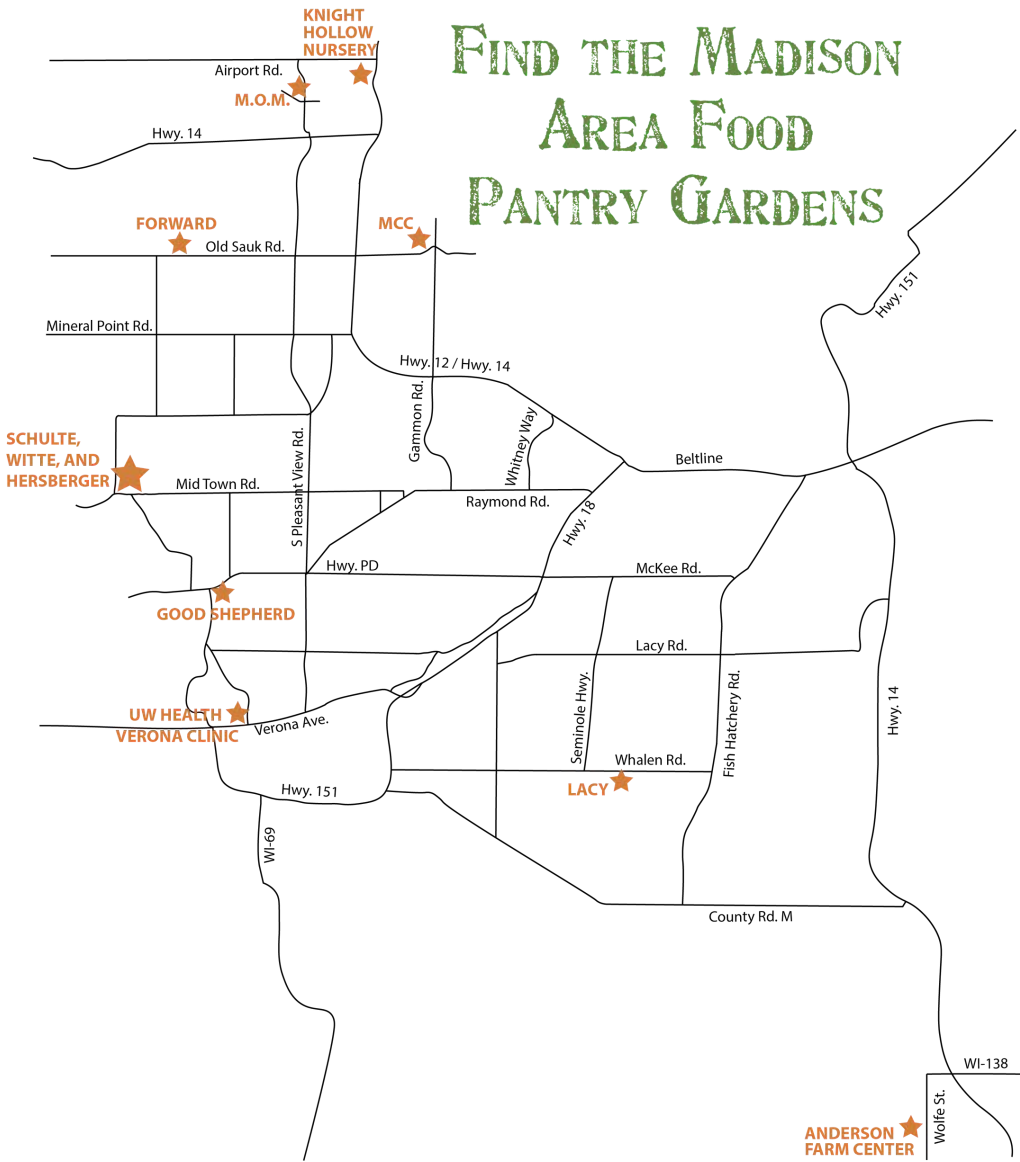
www.wisc.edu/wisconsin-idea/



Adapted from www.cdc.gov/CHInav

Community Locations

There are 10 gardens and one greenhouse located in West and South Madison (Anderson Farm Center, Forward Garden, Good Shepherd Lutheran Church Garden, Hershberger Perennial Garden, Lacy Garden, Madison Christian Community Garden, Middleton Outreach Ministry (MOM) Garden, Knight Hollow Nursery, Schulte Garden, UW Health Verona Clinic Garden, Witte Garden). Forward Garden is MAFPG's largest location with 12 acres at the Pope Farm Homestead.



There were approximately 300 open volunteer sessions between April – November. 2,090 volunteers and 203 different groups (corporate, school, church) contributed 10,542 volunteer hours valued at \$315,733 according to the United Way of Wisconsin. There have been over 13,000 volunteers engaged with MAFPG since 2000.

Volunteers



Yields (Grown & Gleaned)

Total produce donated was 118,893 pounds, valued at over \$230,000 according to Second Harvest Foodbank of Southern Wisconsin (value range: wholesale = \$0.84/pound, market = \$3.09/pound).

For reference, grocery prices in 2022 outpaced inflation throughout the year with produce prices up 9.7% and eggs up 49% year-over-year.

MAFPGs' 2022 yields represent a 44% increase from 82,439# in 2020, Forward Garden's inaugural year. Expanding planting areas at Forward Garden and improved agricultural practices at all sites have contributed to the increased yields.

Produce Grown

The 2020–2025 Dietary Guidelines for Americans recommend adults consume 1.5–2 cup equivalents of fruits and 2–3 cup equivalents of vegetables daily. Unfortunately, only 1 in 11 (11.6%) adults in Wisconsin with low income meet the fruit intake recommendations and 1 in 14 (7.6%) meet the vegetable intake recommendations. MAFPG grew over 60 varieties of produce to meet a variety of cultural needs:

VEGETABLES

- Asparagus
- Basil (Italian, Thai holy)
- Beans (pole, bush)
- Beets
- Bok choy
- Broccoli (packman, calabrese)
- Brussel sprouts
- Cabbage (green, red)
- Carrots
- Cauliflower
- Celery
- Chives
- Cilantro
- Collard greens
- Cucumbers (Marketmore, pickling)
- Eggplant (Asian)
- Fennel
- Garlic (scapes included)
- Green onion
- Kale (red Russian, curly/lacinato)
- Leeks
- Lemongrass
- Lettuce
- Mint
- Okra
- Onions (yellow, red)
- Oregano
- Parsley
- Peas (snap, snow)
- Peppers (banana, bell, habanero, jalapeno, lunchbox, poblano, serrano, Thai chili)
- Popcorn
- Potatoes (red, white, sweet)
- Squash (summer and winter varieties)
- Sweet corn
- Tomatillo
- Tomatoes (cherry and slicing)

FRUITS

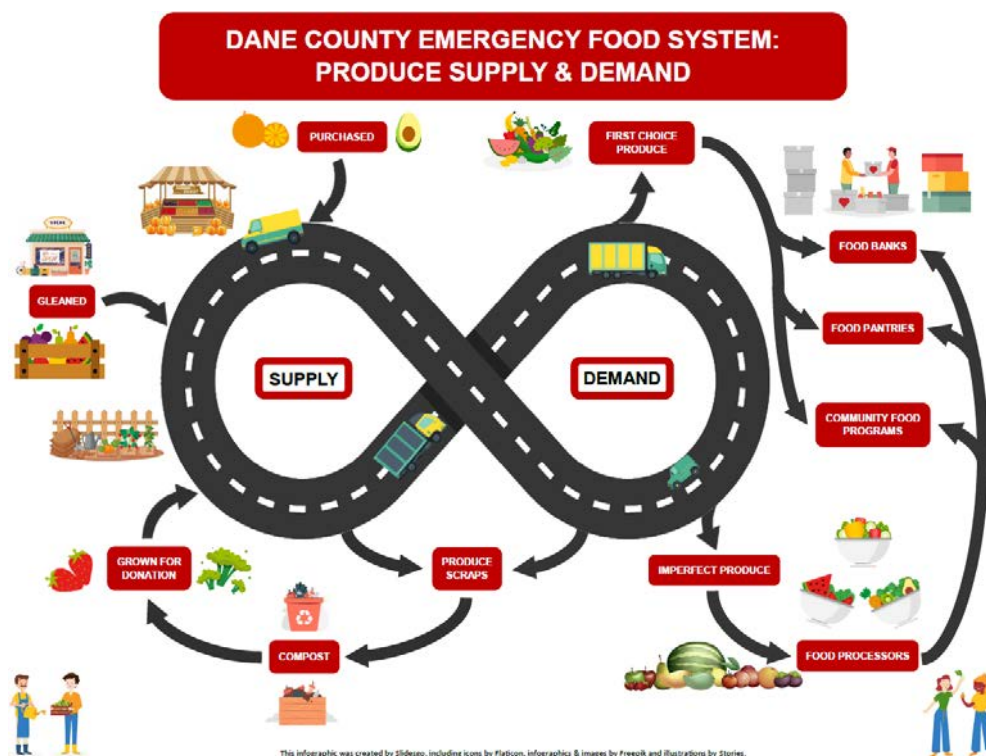
- Apples
- Blackberries (New)
- Bitter melon
- Blueberries
- Cherries
- Melon (honeydew, cantaloupe)
- Peaches (New)
- Raspberries
- Rhubarb
- Strawberries
- Watermelon

Recipients of MAFPG Produce

30 entities received MAFPG produce with six new outlets added in 2022: (*new)

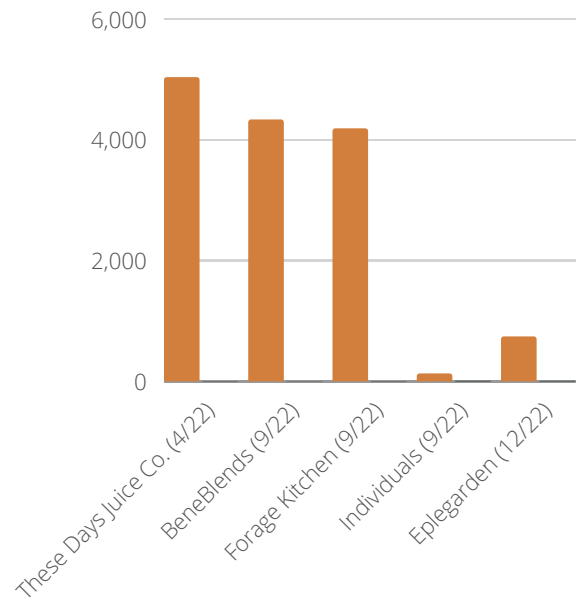
- | | |
|---|---|
| <ol style="list-style-type: none"> 1. Allied Wellness Center* 2. Badger Prairie Needs Network 3. Bayview Foundation 4. Belleville Food Pantry 5. Bethel Lutheran Church 6. Cardinal Nest Middleton High School* 7. Catholic Multicultural Center 8. Community Action Coalition Food Bank 9. Elver Park Neighborhood Center* 10. Extended Hands Mobile Food Pantry 11. First United Methodist Church Pantry 12. Good Shepherd Food Pantry 13. Grace Episcopal Church Food Pantry 14. Healthy Food for All / FEED Kitchens 15. Heights Unlimited Comm. Resource Center | <ol style="list-style-type: none"> 16. LCEC Grab and Go Cooler* 17. Little John's Kitchens 18. Lussier Community Education Center 19. Madison College Food Pantry* 20. MCPASD Weekend Food Program 21. Meadowood Neighborhood Center 22. Middleton Outreach Ministry (MOM) 23. Middleton Youth Center 24. Neighborhood House Community Center 25. Oregon Area Food Pantry 26. St. Mark's Lutheran Church Pantry 27. St. Vincent de Paul Food Pantry 28. The Hmong Institute 29. The River Food Pantry 30. The Vine Church Food Pantry* |
|---|---|

MAFPG helped create an infographic in 2022 that reflects the roles and relationships among community partners in Dane County's emergency food system's produce supply and demand that supports the vision.



2022 Highlights

On-site Composting Pilot at Forward Garden: Starting in the summer 2022, Middleton-based These Days Juice Company began dropping produce compost at Forward Garden. In September 2022, Forage Kitchen (Old Sauk Rd location, Middleton), BeneBlends (Junction Rd, Madison), and household kitchens (Arndt, Lechmaier) were added to the pilot. A total of 24 buckets (3.5 gallons with gamma seal lids) are in circulation, which are picked up by MAFPG volunteers and washed at Middleton Community Church (Middleton, located across from Forward Garden). A total of 14,363 pounds of compost was contributed to Forward Garden.



Forward Garden’s Witte-Schulte intern was Vivian Hacker. David Hurd and Kelly Popper served as AmeriCorps Summer Associates. Becks Gatewood served as Lacy Garden’s first summer intern.

More heavy duty weed barrier was installed at Forward Garden and resulted in improved weed control, plant yields, and volunteer experience.

More fruit was provided as the first blackberries were harvested from Hershberger Perennial Garden, and additional orchard trees were planted at Anderson Farm Center (10 plum, 10 peach).

Anderson Farm Center improvements: (a) An underground irrigation system was installed for 22 community gardens; (b) raised beds were installed (2 with asparagus, 2 with raspberries); (c) an Eagle scout project added 3 compost bins (6ft x 6ft x 5ft) to the garden area.

Ongoing barn renovations at Forward Garden occurred, including the installation of temporary electrical service and lighting, replacement of the barn floor, and installation of an accessible ramp. The improvements have made it safer and have created a functional educational space and pack shed following rain events.

MAFPG expanded educational collaborations at Forward Garden including (a) UW-Madison's Soil Science 499 Environmental Science and Environmental Studies capstone class, which included 14 students, completed comprehensive soil testing and made several compost, weed management, and outreach recommendations; (b) More than 700 kids helped raise chickens and grow produce including over 400 Pope Farm Elementary students who planted and harvested pumpkins for a PTO fundraiser.

The inaugural Harvest Celebration Event was held at Forward Garden on October 1, with over \$10,000 raised to support MAFPGs' general operations.

A strategic planning session was held on December 8, with input provided by more than 40 community stakeholders (including other Dane County non-profits) giving MAFPG future direction.



2023 Goals

- Purchase the Pope Farm Homestead by April 1, 2023.
- Develop an overall irrigation plan for Forward Garden including installation of a new well.
- Hire a part-time marketing professional to help expand our reach and share stories of MAFPGs' impact.
- Hire a part-time (12 weeks) Associate Farm Manager at Forward Garden to:
 - Support the full-time Farm Manger at the height of the harvest season (August-October);
 - Harvest late-season produce volume;
 - Participate in end-of-season cleanup after summer interns complete their 12-week assignments and after corporate groups are usually done volunteering;
 - Share the workload on Wednesdays (most popular day for corporate groups to use their volunteer time off) and Saturdays (most popular day with church groups).
- Recruit an AmeriCorps VISTA member to:
 - Support volunteer scheduling across all sites;
 - Improve produce transportation and distribution logistics. Pantries frequently change their vegetable distribution approach which requires ongoing adjustments to ensure an appropriate volume of produce reaches them at the time it's needed. In 2022, 56% of all deliveries occurred on Monday or Wednesday. Madison College Food Pantry, Extended Hands Food Pantry, and MCPASD's Weekend Food Program picked up their own produce at Forward Garden.
- Make significant repairs to both the John Deere Tractor and the Dodge Ram truck.
- Explore alternate produce distribution options:
 - Consider a different vehicle with larger cargo capacity, as the volume of produce that needs to be distributed at peak harvest does not fit in the Dodge Ram truck;
 - Partner with Healthy Food For All who has the capacity to pick up produce at Forward Garden and deliver to multiple outlets.
- Acquire additional material handling equipment such as carts, dollies, and a pallet jack to reduce injury risk to volunteers as many crops are very heavy.

- Increase produce gleaned by 5% (2,000#):
 - Expand the number of locations produce is gleaned from;
 - Increase the number of volunteers involved with the gleaning team;
 - Partner with local produce processors as the volume of certain crops (e.g. Arlington cabbage) is occasionally more than distribution outlets can accommodate at once.
- Increase produce grown by 5% (6,000#):
 - Expand the size of vegetable plots and plant more perennial fruits at Anderson Farm Center, Forward Garden, and Hershberger Perennial Garden;
 - Purchase and apply more heavy duty weed barrier;
 - Purchase a bed shaper to improve attractiveness and yields of root vegetables;
 - Improve soil health by applying MAFPGs' compost to selected plots.
- Improve volunteer experience:
 - Purchase an ADA compliant portable toilet for Forward Garden (every 2 week toilet maintenance);
 - Continue barn improvements with (1) stabilization of the silo base; (2) foundation repairs; (3) wood siding and window replacement; (4) updating the electrical wiring.
- Extend the 2022 composting pilot with 35,000# expected in 2023 with the following next steps:
 - Finalize plans with O2 Compost and begin construction on an aerated compost system;
 - Increase the number of buckets delivered and/or pick-up days from Forage Kitchen;
 - Invite individual households to drop off pre-specified compostable materials at Forward Garden.
- Expand educational collaborations at Forward Garden including:
 - UW-Madison's marketing class capstone experience related to MAFPGs' fundraising efforts;
 - MMSD's Goodman Greenhouse at Spring Harbor Middle School;
 - MCPASDs' Pope Farm Elementary School's outdoor science education curriculum.
- Host the 2nd annual Harvest Celebration Event in the fall at the Pope Farm Homestead.
- Revisit the goals made in the December 2022 strategic planning session.



Development Plans

(2023 - 2025)

- Continue developing partnerships with those identified in the Wisconsin EATS Healthy vision.
- Continue to focus on health equity and developing cultural connections with Hmong, Latinx, and Black communities.
- Continue planning for ongoing development at the Pope Farm Homestead including:
 - Replacement of the equipment shed;
 - Farmhouse renovations (e.g., ADA bathroom, kitchen for light processing, nutrition education).
- Expand food processing capabilities with community partners to harness MAFPG's blemished produce value (e.g., single-serving, chef-quality, heat-and-eat meals) to increase produce consumption.
- Aim for year-round production:
 - On-site greenhouse that may accommodate hydroponics or aquaponics for year-round growing;
 - Frost protection.
- Focus on environmental stewardship, conservation, and sustainability:
 - Improved soil health / cover crops / erosion control;
 - Food waste reduction / composting;
 - Solar power;
 - Rainwater collection;
 - Pollinator habitats.
- Improve accessibility and opportunities for individuals with differing abilities:
 - Raised beds and other vertical gardening;
 - Mobility support at the gardens such as:
 - Utility vehicle (such as John Deere Gator or Polaris Ranger);
 - Action Trackchair (all-terrain wheelchair).
 - Host special education students such as the 18-21 year transitions program for vocational training;
 - Occupational therapy for elementary, middle, and high school students.

Positioned for the Future

MAFPG has a 22-year history of success with humble volunteers and servant leaders who are hardworking, passionate, dedicated, thoughtful, and collaborative. The organization dynamically responds to meet the community's evolving needs. A new generation of volunteers and organizational leadership has emerged and is engaged to help continue to move MAFPG forward. New board members in 2022 include Jane Mount and David Ropa. Nearly 150 individual donors provided financial support in 2022 putting MAFPG in a healthy financial position. Business and agriculture practices and systems continue to be refined and updated, thus transforming MAFPG into an organization primed for co-creating programming with many community partners to improve community-level nutrition security for individuals and households for years to come.

Respectfully submitted,



Brian Arndt
Development Director (volunteer), Madison
Area Food Pantry Gardens, Inc.



Email Address

bgarndt10@gmail.com



Website

www.foodpantrygardens.org

